

Our Program

- Endodontic diagnosis
- Case selection & treatment planning
- Analgesia and anesthesia
- Managing endodontic emergencies & flare-ups
- Isolation, access and locating canals
- Hand and rotary instrumentation
- Working length troubleshooting
- Irrigation protocol and strategies
- Obturation
- Post endodontic restorations
- Managing endodontic mishaps
- Decoding the Mb2 enigma
- CBCT endodontic applications
- Efficiency, productivity & scheduling

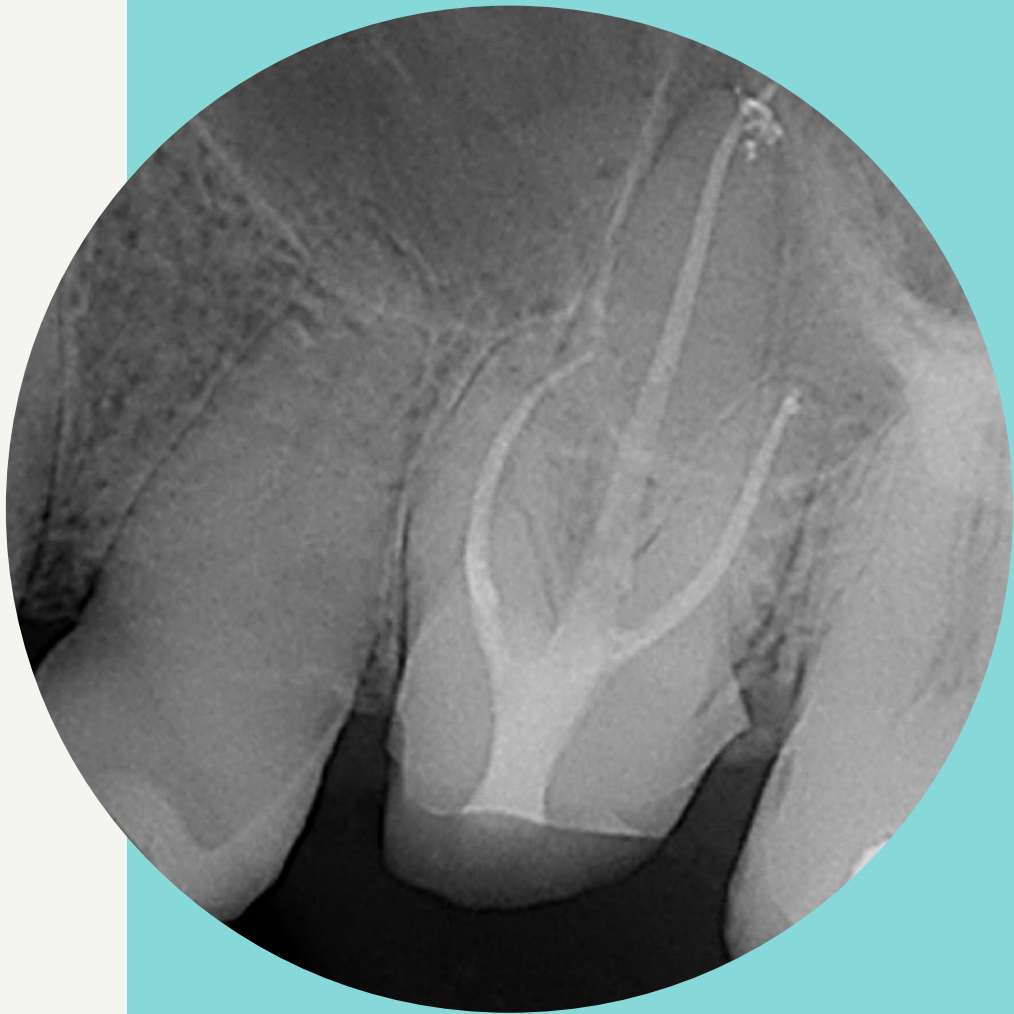
THE FACULTY

Rajiv G. Patel BDS, DDS
Suman Bathina BDS
Richard B. Finley DMD
Shreyas Oza BDS,DDS, MSD

COURSE LOCATION:

Endodontic Excellence facility located 15 mins from DFW airport.

Endodontic Excellence
4421 Long Prairie Road, Suite 400,
Flower Mound, TX 75028



A comprehensive practical approach to root canal treatment for beginners & a refresher for the seasoned clinicians.



- **Endodontic**
- **Success for the**
- **General Dentist**
- Comprehensive Hands-On Course

\$1795

14 CE credits

AGD subject codes: 070,200,340

**limited participants with
interactive hands-on
education & access to online
community**

Course objectives

The course is designed to provide the participant with an evidence based understanding of the following:

- Systematic diagnostic protocol
- Smart case selection and treatment planning
- Pain management with discussion of anesthesia, specific to hot tooth management.
- Analgesics and Antibiotics
- Managing endodontic emergencies and preventing flare-ups and mishaps
- Importance of isolation, tips, tricks and armamentarium
- Access preparation and locating canals.
- Understanding endodontic anatomy
- Working length determination and troubleshooting
- Predictable instrumentation with hand and rotary instruments
- Irrigation protocol and strategies
- Obturation and troubleshooting
- Post endodontic restorations, post placement - when and how?
- Endodontic applications of cone beam computed tomography.
- Practice management aspects to improve efficiency and productivity

Registration details

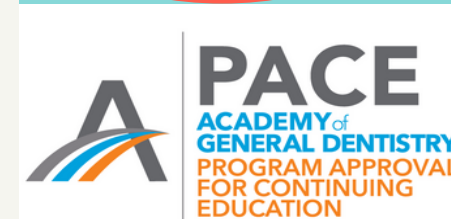
No prerequisites to attend
Course is for Dentists only
Venmo @endosucces or
Check in favor of " Share Study Club LLC"
Cancellation fees assessed
No financial / commercial ties to disclose
Supplies & lunches are included.
Participants are encouraged to bring their magnification loupes.
Participants are required to bring unmounted extracted teeth for the hands-on participation.



DATES

April 13-14,2024
June 15-16,2024
August 31 -Sept 1,2024

Course
timings
8 am -5 pm
both days



Share Study Club
Nationally Approved PACE Program
Provider for FAGD/MAGD credit.
Approval does not imply acceptance by
any regulatory authority or AGD endorsement.
9/1/2022 to 8/31/2025
Provider ID# 371656

How to register:

sign up via email and join us!
Limited space - reserve your seat today!
visit www.endoxl.com
email us at endoxlsuccess@gmail.com
call us at (323)899-2195