

# Our Program

- Endodontic diagnosis
- Case selection & treatment planning
- Analgesia and anesthesia
- Managing endodontic emergencies & flare-ups
- Isolation, access and locating canals
- Hand and rotary instrumentation
- Working length troubleshooting
- Irrigation protocol and strategies
- Obturation
- Post endodontic restorations
- Managing endodontic mishaps
- Decoding the Mb2 enigma
- CBCT endodontic applications
- Efficiency, productivity & scheduling

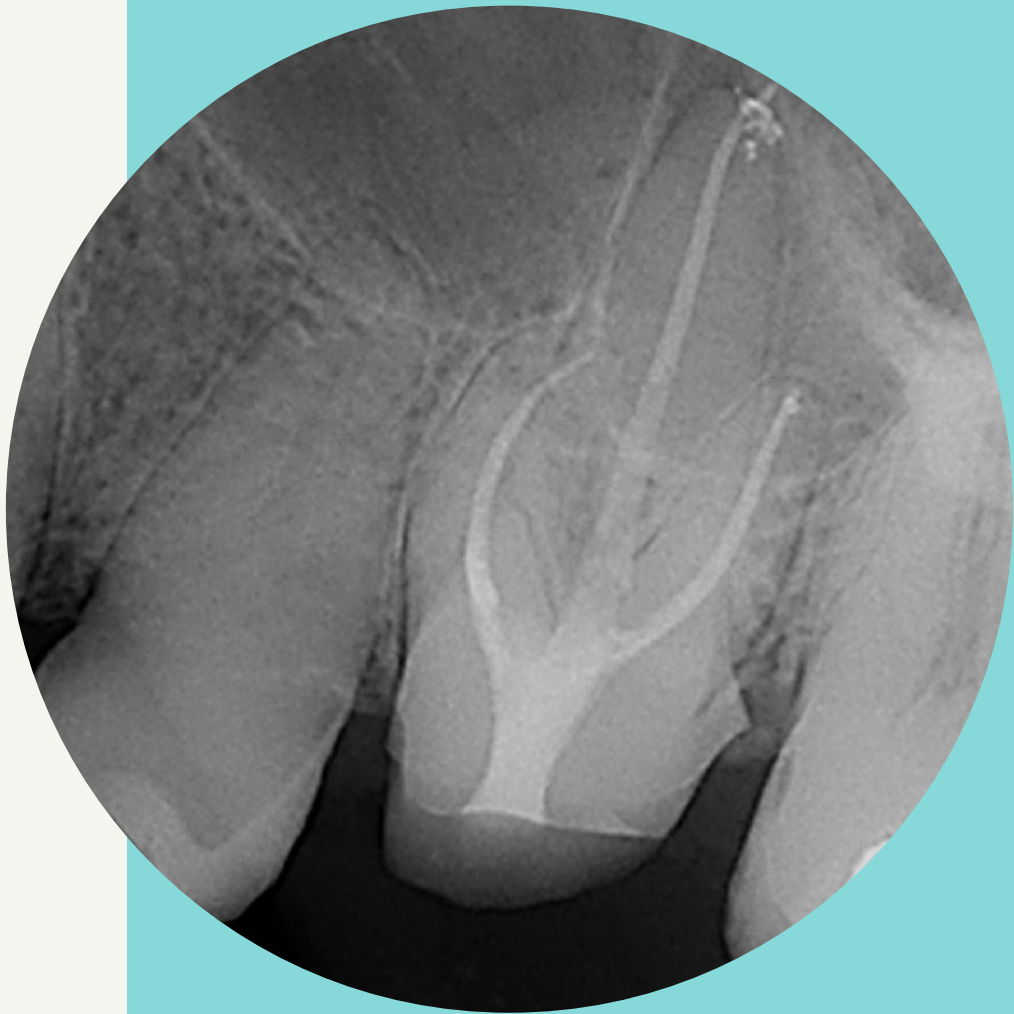
## THE FACULTY

Rajiv G. Patel BDS, DDS  
Suman Bathina BDS  
Richard B. Finley DMD  
Shreyas Oza BDS,DDS, MSD  
Amruta Mahajan BDS

## COURSE LOCATION:

Endodontic Excellence facility located 15 mins from DFW airport.

Endodontic Excellence  
4421 Long Prairie Road, Suite 400,  
Flower Mound, TX 75028



**A comprehensive practical approach to root canal treatment for beginners & a refresher for the seasoned clinicians.**



- **Endodontic**
- **Success for the**
- **General Dentist**
- Comprehensive Hands-On Course

**\$1695**

**14 CE credits**

**AGD subject codes: 070,200,340**

**limited participants with  
interactive hands-on  
education & access to online  
community**

## Course objectives

The course is designed to provide the participant with an evidence based understanding of the following:

- Systematic diagnostic protocol
- Smart case selection and treatment planning
- Pain management with discussion of anesthesia, specific to hot tooth management.
- Analgesics and Antibiotics
- Managing endodontic emergencies and preventing flare-ups and mishaps
- Importance of isolation, tips, tricks and armamentarium
- Access preparation and locating canals.
- Understanding endodontic anatomy
- Working length determination and troubleshooting
- Predictable instrumentation with hand and rotary instruments
- Irrigation protocol and strategies
- Obturation and troubleshooting
- Post endodontic restorations, post placement - when and how?
- Endodontic applications of cone beam computed tomography.
- Practice management aspects to improve efficiency and productivity

## Registration details

Venmo @endosucces or

Check in favor of " Share Study Club LLC"

Cancellation fees assessed

Supplies & lunches are included.

Participants are encouraged to bring their magnification loupes.

Participants are required to bring unmounted extracted teeth for the hands-on participation.



## DATES

January 21-22, 2023

April 15-16, 2023

May 27-28, 2023

June 24-25, 2023

September 23-24, 2023

November 11-12, 2023



Share Study Club  
Nationally Approved PACE Program  
Provider for FAGD/MAGD credit.  
Approval does not imply acceptance by  
any regulatory authority or AGD endorsement.  
9/1/2022 to 8/31/2025  
Provider ID# 371656

## How to register:

sign up via email and join us!

Limited space - reserve your seat today!

visit [www.endoxl.com](http://www.endoxl.com)

email us at [endoxlsuccess@gmail.com](mailto:endoxlsuccess@gmail.com)

call us at (323)899-2195

